







KEY

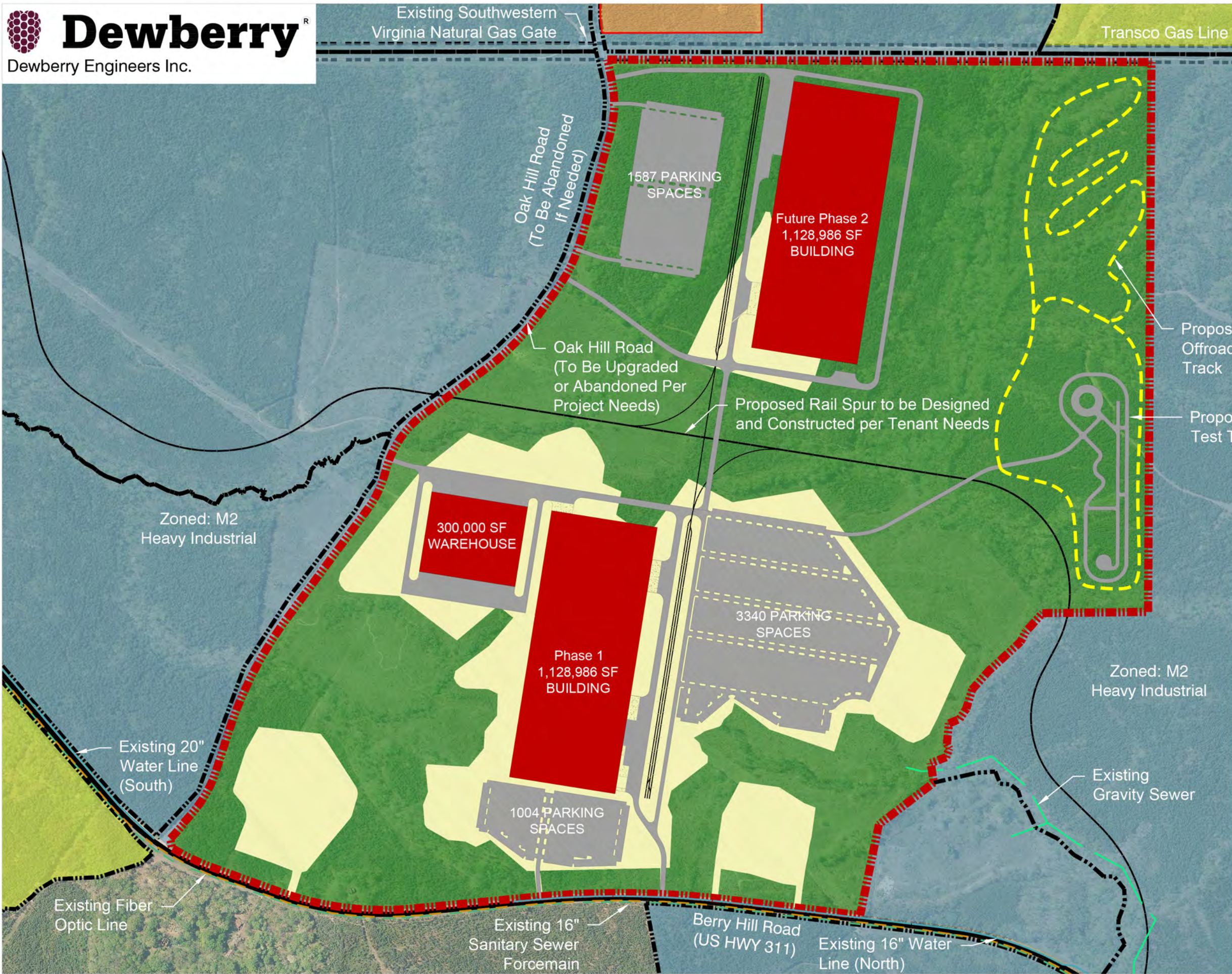
-  Potential Project Area
-  Existing Pad (200 Total Acres)
-  Available Industrial Area
-  Preservation and Recreation Area
-  Southern Virginia Solar Park
-  U.S. Route 311 Industrial Corridor

**Automotive Facility
Overall Conceptual Layout -
Southern Virginia Megasite
at Berry Hill**



Existing Southwestern Virginia Natural Gas Gate

Transco Gas Line

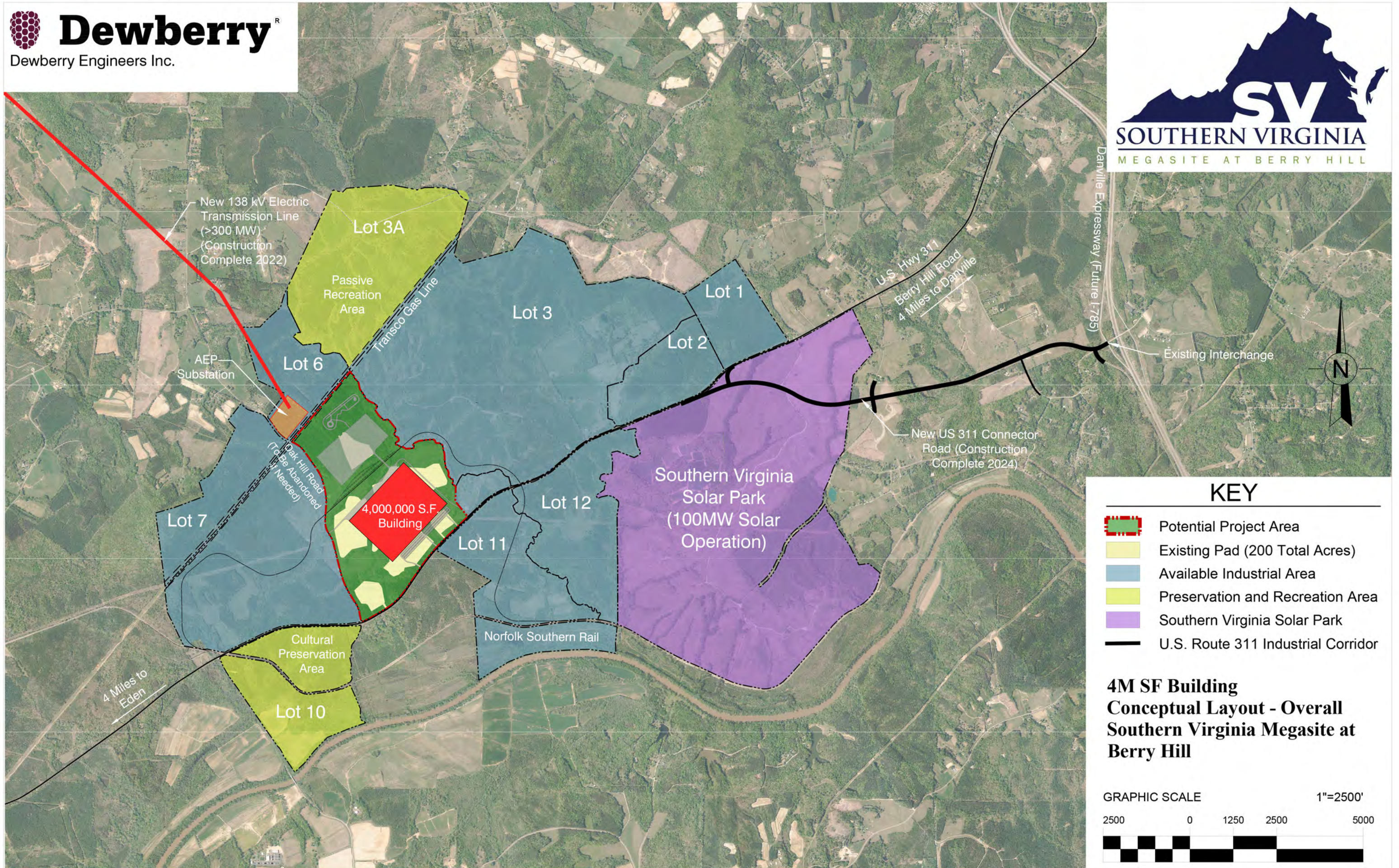


KEY

- Potential Project Area
- Existing Pad (200 Total Acres)
- Available Industrial Area
- Preservation and Recreation Area
- U.S. Route 311 Industrial Corridor

**Automotive Facility
Conceptual Layout
Southern Virginia Megasite at
Berry Hill**



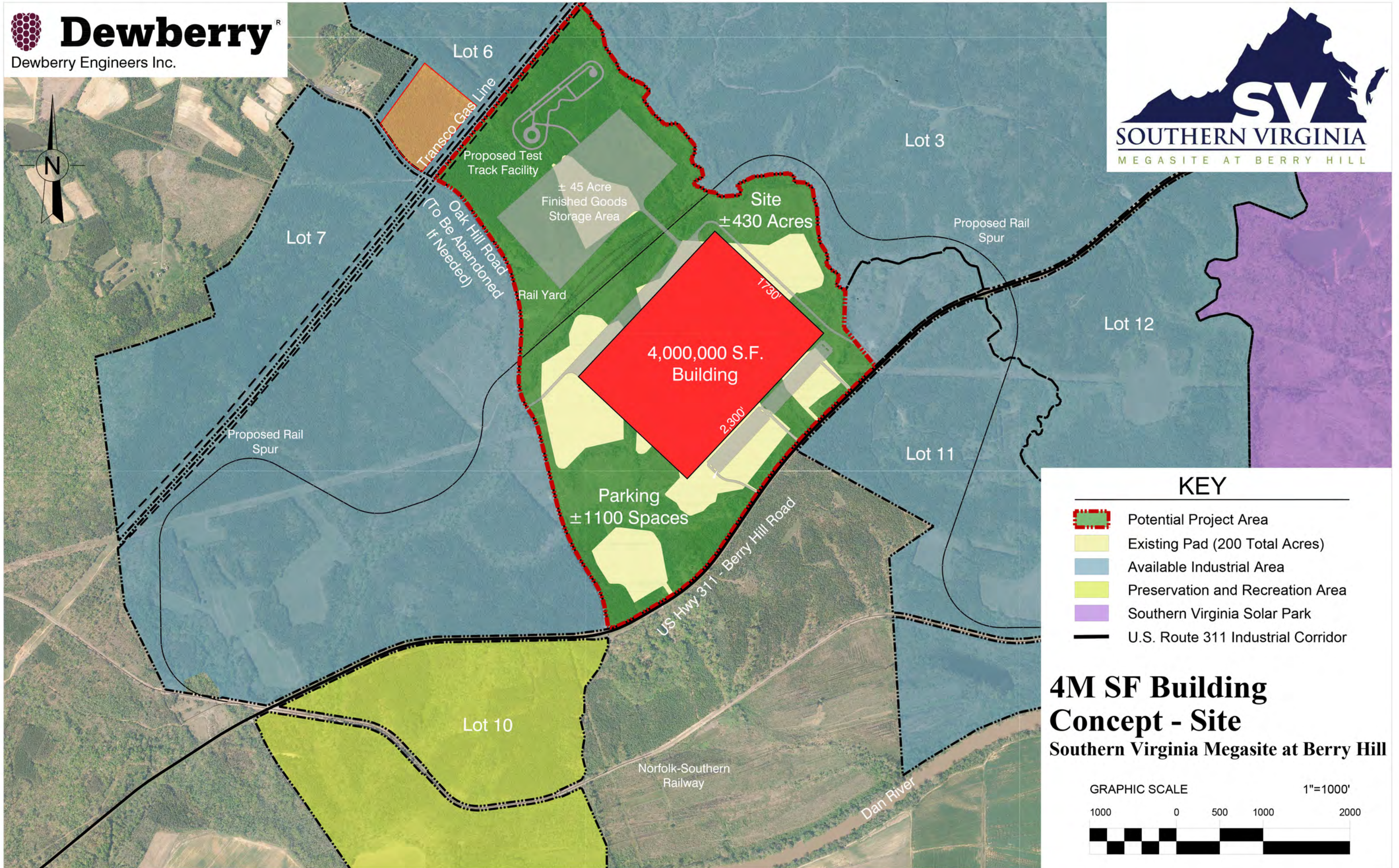


KEY

- Potential Project Area
- Existing Pad (200 Total Acres)
- Available Industrial Area
- Preservation and Recreation Area
- Southern Virginia Solar Park
- U.S. Route 311 Industrial Corridor

**4M SF Building
Conceptual Layout - Overall
Southern Virginia Megasite at
Berry Hill**

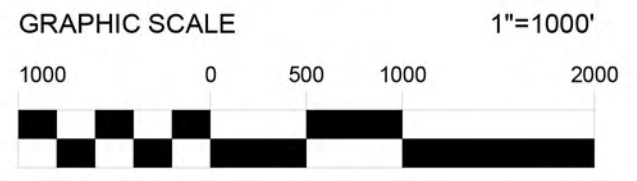


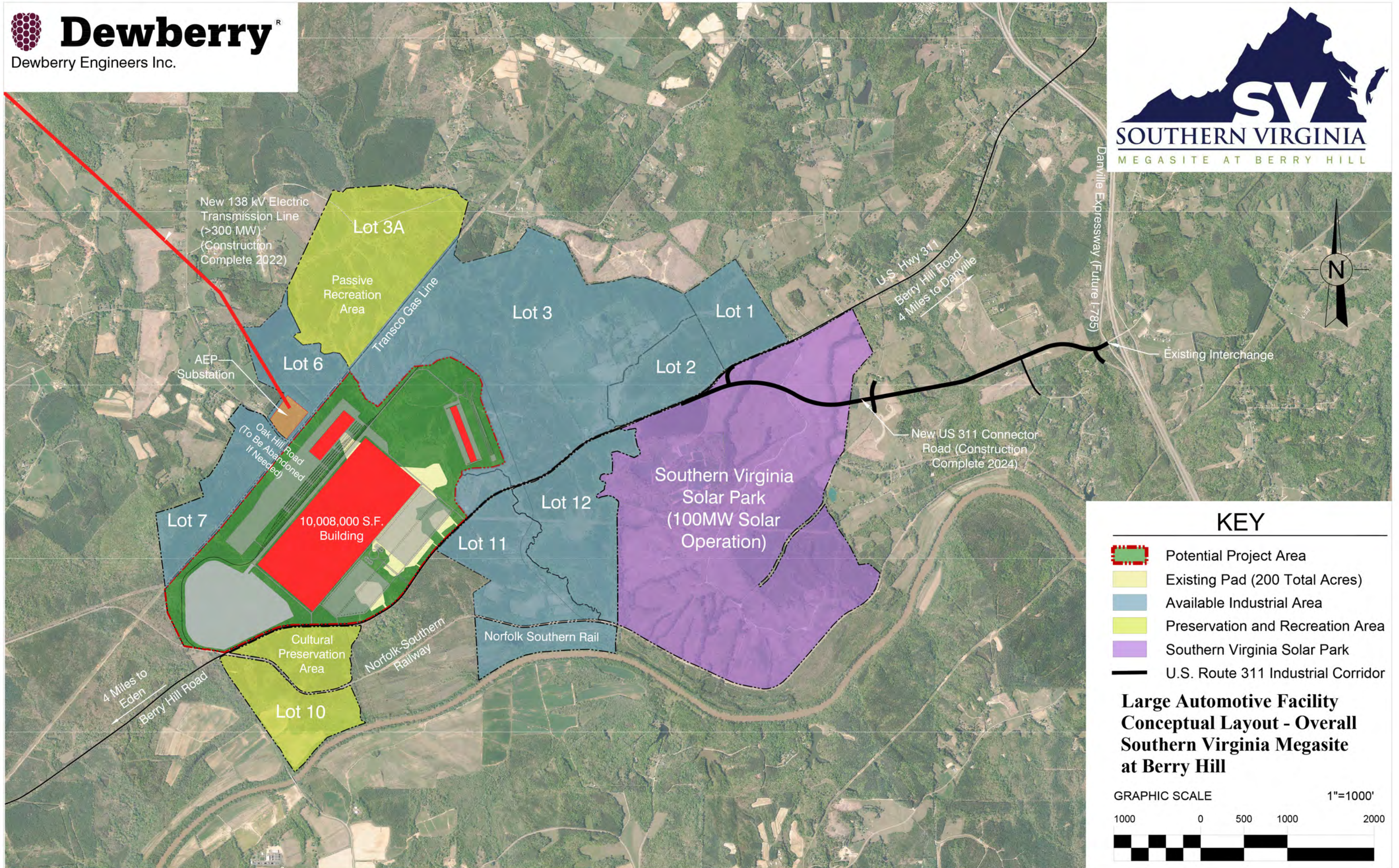


KEY







- Potential Project Area
- Existing Pad (200 Total Acres)
- Available Industrial Area
- Preservation and Recreation Area
- Southern Virginia Solar Park
- U.S. Route 311 Industrial Corridor

**4M SF Building
Concept - Site**
Southern Virginia Megasite at Berry Hill

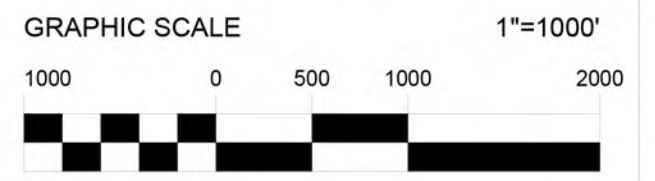


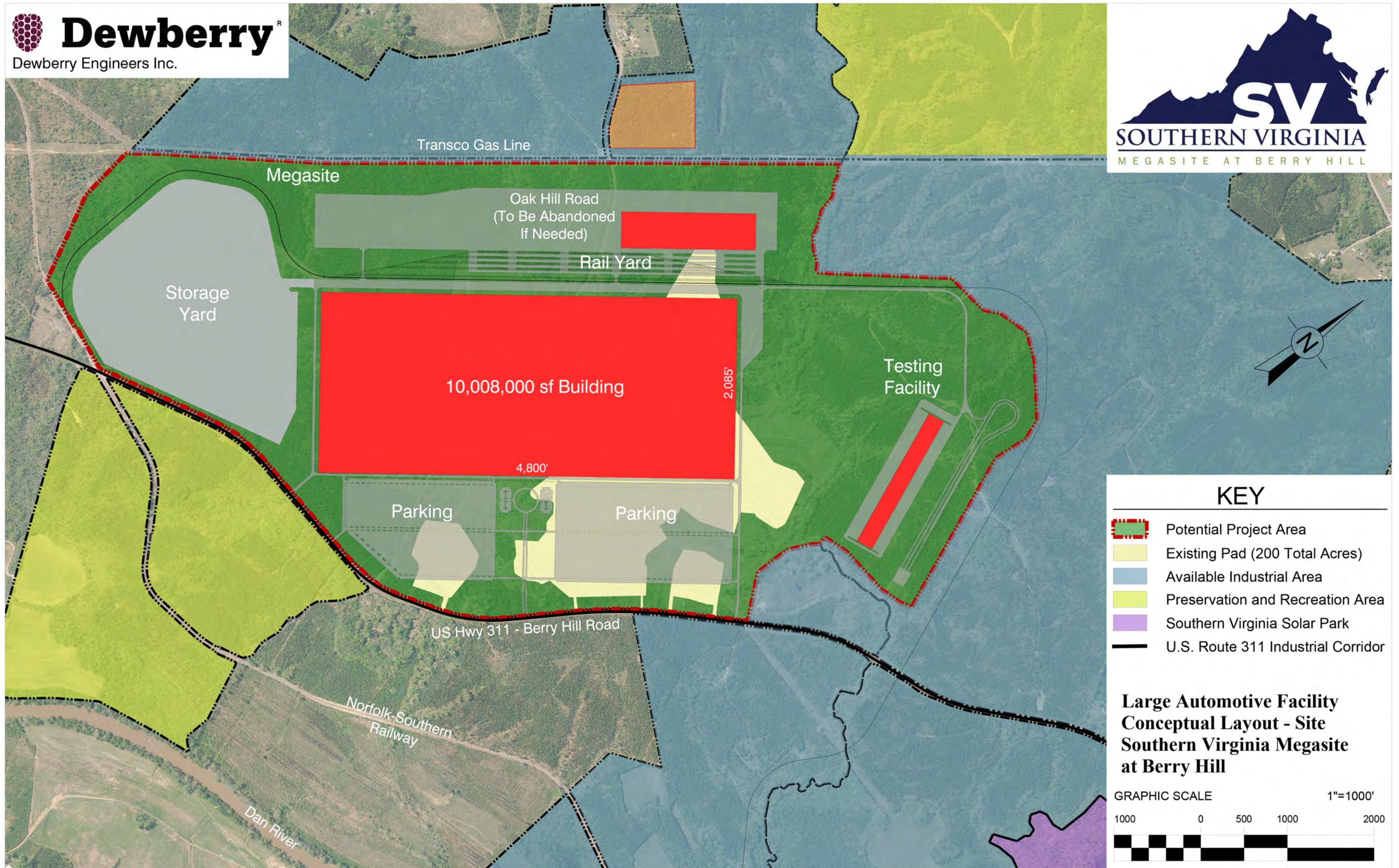


KEY




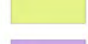


-  Potential Project Area
-  Existing Pad (200 Total Acres)
-  Available Industrial Area
-  Preservation and Recreation Area
-  Southern Virginia Solar Park
-  U.S. Route 311 Industrial Corridor

**Large Automotive Facility
Conceptual Layout - Overall
Southern Virginia Megasite
at Berry Hill**





KEY

-  Potential Project Area
-  Existing Pad (200 Total Acres)
-  Available Industrial Area
-  Preservation and Recreation Area
-  Southern Virginia Solar Park
-  U.S. Route 311 Industrial Corridor

**Large Automotive Facility
Conceptual Layout - Site
Southern Virginia Megasite
at Berry Hill**

